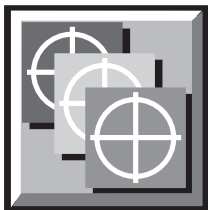


ECRM[®]

Every Customer Really Matters

***PostScript™ Printer Descriptions
Installation and Release Notes***



ECRM

*554 Clark Rd.
Tewksbury, MA 01876
Phone (978) 851-0207 Fax - (978) 851-7016*

AG11915 Rev. 1

PostScript Printer Descriptions Installation and Release Notes

This guide reflects the PostScript Printer Descriptions Installation and Release Notes
as of May, 1998.

© copyright ECRM Incorporated, 1998

Information on ordering additional copies of this manual may be obtained by writing or
calling:

ECRM Order Processing

554 Clark Road
Tewksbury, MA 01876

Phone No. (US) - (978) 851-0207 — Fax (US) - (978)-851-7016

Phone No. (UK) - (44) 1923-218255 — Fax (UK) (44) 1923-218256

Phone No. (Hong Kong) - 852-2-564-8989 — Fax (Hong Kong) 852-2-564-8821

AppleLink

ECRM.SUPPORT (US)

ECRM.UK (UK)

FEP.ECRM (Hong Kong)

Proprietary Notice

The information contained within this guide is the property of ECRM Incorporated. No transmission, reproduction, transcription, storage in a retrieval system, translation into any language, or other use is permitted in whole or in part in any form without first obtaining written permission of ECRM Incorporated.

List of Trademarks or Registrations, ECRM® is a registered trademark of ECRM, Incorporated, PelBox® is a registered trademark of ECRM, Incorporated, KnockOut 4550® is a registered trademark of ECRM, Incorporated. Adobe, PostScript, Adobe PageMaker, Adobe Photoshop, and Adobe Illustrator are trademarks of Adobe Systems, Inc. which may be registered in certain jurisdictions. Microsoft, Windows, and Windows NT are trademarks or registered trademarks of Microsoft Corporation. Apple, Macintosh, Power Macintosh, LaserWriter, and AppleTalk are trademarks or registered trademarks of Apple Computer, Inc. Quark® and QuarkXPress® are registered trademarks of Quark, Inc.

AG11915 Rev.1

Table of Contents

Introduction	Page 3
Windows NT 4.0	Page 5
Windows 95	Page 19
Power Macintosh	Page 25

Introduction

PostScript Printer Description (PPD) files provide device specific features to PostScript drivers and applications. Such features include different page sizes, custom page size, memory size, device type, resolutions, font availability, imaging area, lines per inch (lpi) and screen angles

PPD files are used in conjunction with PostScript printer drivers providing the user with an output channel with device specific or device family specific features.

Numerous applications (e.g. QuarkXPress, Adobe PageMaker, and Adobe Illustrator) employ PPD files for access to a device's features such as default settings, feature options, and the ability change settings. These applications can parse PPD files to discover the available features on a device providing a use interface. When a user selects a feature from the user interface, the code for each selected feature is extracted from the PPD file and included in the appropriate place in the output file before the output file is sent to the output channel.

New Features

- Additional page sizes
- Additional linescreen pairings
- Improved custom page features
- Auto Separation ability built in (operation determined at the RIP)
- Selectable resolution from fixed list

PostScript Printer Description Installation and Release Notes

Windows NT 4.0

Introduction

This section contains the procedures used to install PostScript Printer Descriptions (PPDs) on Intel computers running the Microsoft Windows NT 4.0 operating system. The installation of these PPDs requires your familiarity with the Windows NT operating system and the applications that employ them.

Requirements

- Microsoft Windows NT 4.0 must be installed.
- Windows NT 4.0 installation media CD ROM or diskettes must be available.

PostScript Printer Descriptions

Windows NT 4.0 PPD Installation:

From your PC application workstation, when a new printer port has to be established perform the following:

1. From the Windows NT start-up screen, click the **Start** button on the task bar to open the Start menu.
2. In the Start menu highlight the *Settings* option to open the menu then click the *Printers* option to open the Printers group window.
3. In the Printers group double click on the **Add Printer** icon to launch the Add Printer Wizard (Figure 1).
4. In the Add Printer Wizard (Figure 1) click the **My Computer** radio button to identify your computer as the printer manager.

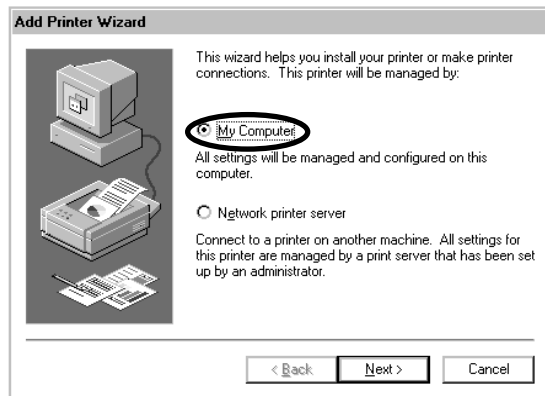


Figure 1. Add Printer Wizard

5. Click **Next**.

6. Click the **Add Port** button to open the Printer Ports dialog box (Figure 2).
7. In the **Available Printer Ports** list highlight **AppleTalk Printing Devices**, then click **New Port** (Figure 2).

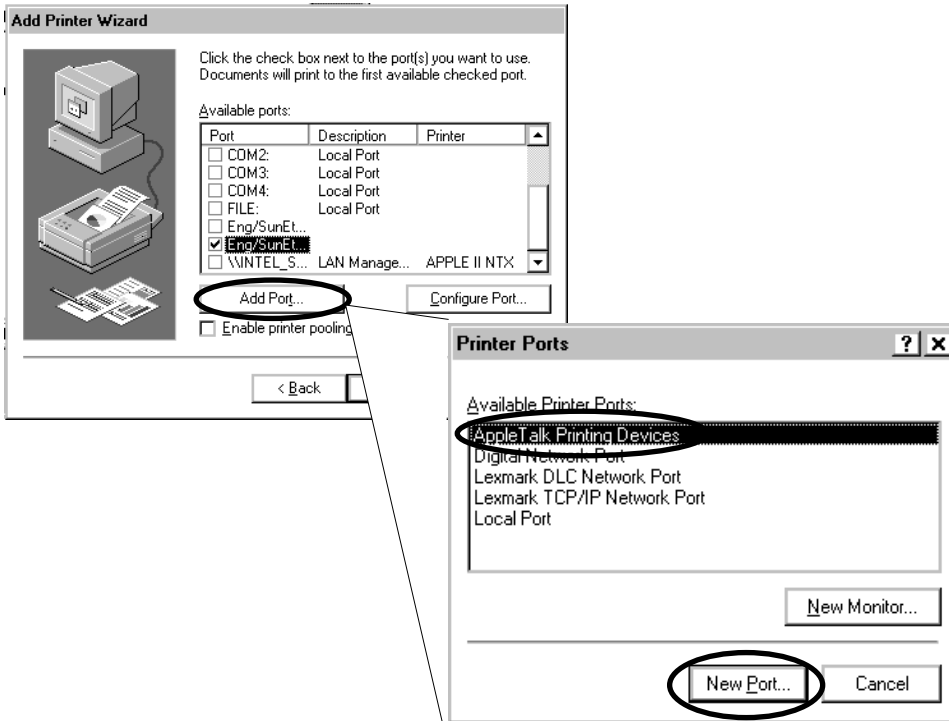


Figure 2. Selecting a Printer Port

PostScript Printer Descriptions

8. In the **AppleTalk Printing Devices** list, double click the desired AppleTalk zone (Figure 3). Wait for the wizard to finish searching for the AppleTalk Printing Devices in this zone.



Figure 3. Selecting an AppleTalk Zone

9. In the **AppleTalk Printing Devices** list, double click on a published RIP page setup (Figure 4).

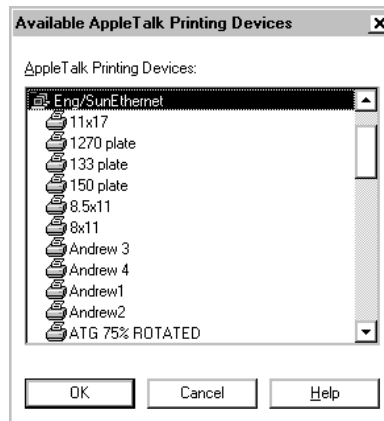


Figure 4. Selecting a RIP Page Setup

10. When prompted, click **No** to capture the AppleTalk printing device.
11. Click **Close** in the Printer Ports dialog box.
12. Click the **Next** button.

13. In the table below complete the section that describes your installation:

Installing the initial PPD:new port	Attaching an existing PPD:new port	Replacing a current PPD:new port
<ul style="list-style-type: none"> a) Click the Have Disk button. b) Insert the RIP CD ROM disk. c) Click the Browse button to locate the CD ROM drive and the appropriate PPD folder. d) Open the PPD installer file and click OK. e) In the Printers list, select the appropriate imagesetter. f) Click Next. 	<ul style="list-style-type: none"> a) In the Manufacturers list select the appropriate manufacturer. b) In the Printers list, select the appropriate imagesetter. c) Click Next. d) Select the Keep existing driver radio button. e) Click Next. 	<ul style="list-style-type: none"> a) Click the Have Disk button. b) Insert the RIP CD ROM disk. c) Click the Browse button to locate the CD ROM drive and the appropriate PPD folder. d) In the Printers list, select the appropriate imagesetter. e) Click Next. f) Select the Replace existing driver radio button. g) Click Next.

PostScript Printer Descriptions

14. Enter the default printer name or a more descriptive name describing the input channel or page setup selected. For example, **Job#1274** or **1270NegMirror** (Figure 5).

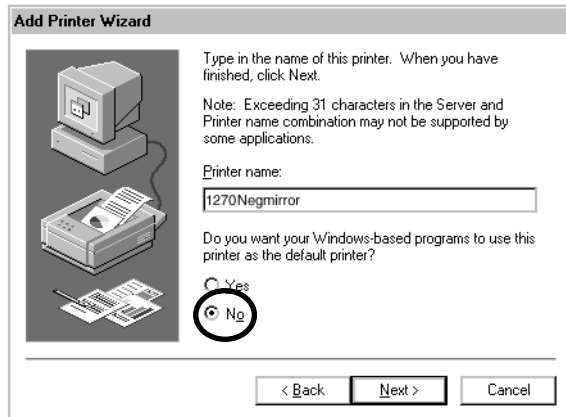


Figure 5. Specifying a Printer Name and Default Status

15. If available, choose the **Yes** or **No** radio button to specify whether this is the default printer (Figure 5). Normally this selection is **No**.
16. Click **Next**.
17. Click either the **Shared** or **Not shared** radio button to choose whether to share with non-AppleTalk protocol computers (Figure 6).

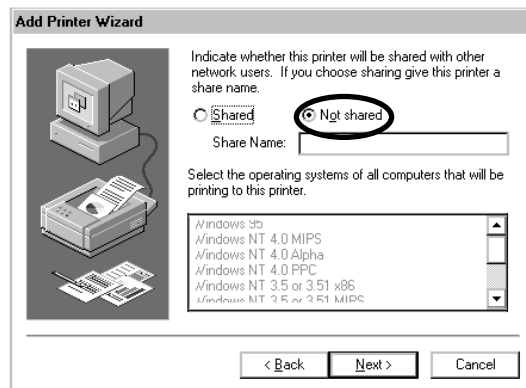


Figure 6. Entering Sharing Information

Typically it is not necessary to share the printer. Selecting **Shared** allows Windows NT to make the AppleTalk Protocol printer available to other computers that are on the Microsoft network but without AppleTalk protocol.

If you choose **Shared**, complete steps a) and b) below:

- a) Enter a printer name in the **Share Name** field.
- b) In the list box, select the operating system of each computer that you expect to use with this printer.

Note: If you have any questions on sharing consult your network administrator or see your operating systems' user guide.

18. Click **Next**.

19. The wizard issues the following prompt: **Would you like to print a test page?**

Click **No**.

Note: You may select **Yes** to this prompt only if your imagesetter and RIP are configured, operational, and ready to receive AppleTalk jobs.

20. Click **Finish**.

21. If prompted to load the Windows NT Printer Descriptions media or Windows NT operating system media, load the required diskette or CD.

22. The PPD installation is complete. However, if your application is QuarkXPress or PageMaker continue with the instructions on Page 17.

PostScript Printer Descriptions

Windows NT 4.0 PPD Installation: Existing Port

From your PC application workstation, when a printer port already exists, perform the following:

1. On the Windows NT start-up screen, click the **Start** button on the task bar to open the Start menu.
2. In the Start menu highlight the *Settings* option to open the menu then click the *Printers* option to open the Printers group window.
3. In the Printers group double click on the **Add Printer** icon to launch the Add Printer Wizard (Figure 7).
4. In the Add Printer Wizard (Figure 7) click the **My Computer** radio button to identify your computer as the printer manager.

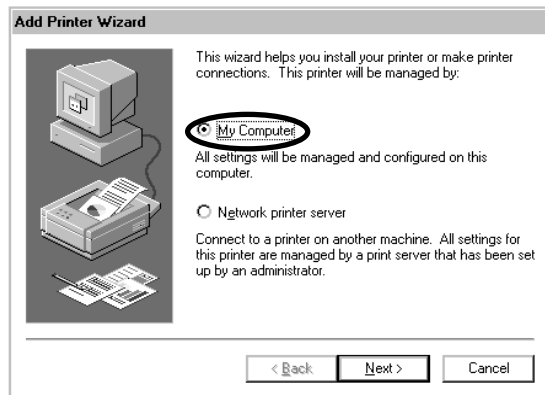


Figure 7. Add Printer Wizard

5. Select an existing AppleTalk port and click **Next**.

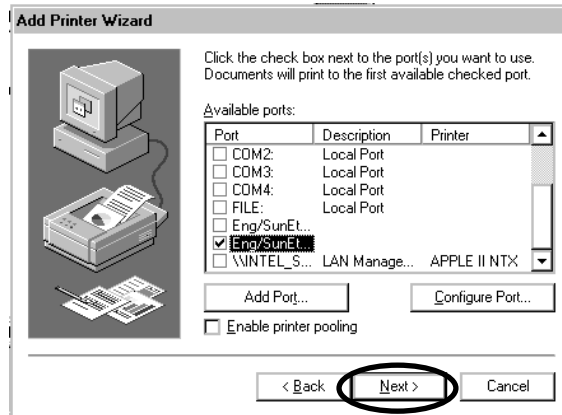


Figure 8. Selecting an AppleTalk Port

PostScript Printer Descriptions

6. In the table below complete the section that describes your installation:

Installing the initial PPD: existing port	Attaching an existing PPD: existing port	Replacing a current PPD: existing port
<ul style="list-style-type: none"> a) Click the Have Disk button. b) Insert the RIP CD ROM disk. c) Click the Browse button to locate the CD ROM drive and the appropriate PPD folder. d) Open the PPD installer file and click OK. e) In the Printers list, select the appropriate imagesetter. f) Click Next. 	<ul style="list-style-type: none"> a) In the Manufacturers list, select the appropriate manufacturer. b) In the Printers list, select the appropriate imagesetter. c) Click Next. d) Select the Keep existing driver radio button. e) Click Next. 	<ul style="list-style-type: none"> a) Click the Have Disk button. b) Insert the RIP CD ROM disk. c) Click the Browse button to locate the CD ROM drive and the appropriate PPD folder. d) In the Printers list, select the appropriate imagesetter. e) Click Next. f) Select the Replace existing driver radio button. g) Click Next.

7. Enter the default printer name or a more descriptive name describing the input channel or page setup selected. For example, **Job#1274** or **1270NegMirror** (Figure 9).

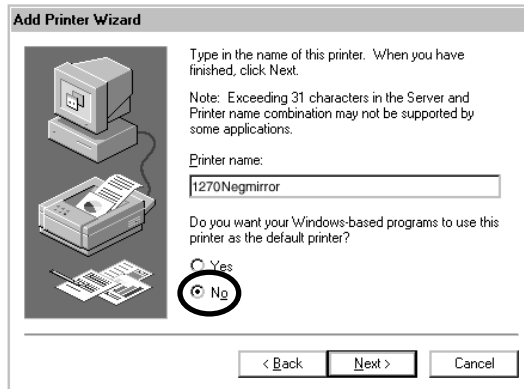


Figure 9. Specifying a Printer Name and Default Status

8. Choose the **Yes** or **No** radio button to specify whether this is the default printer (Figure 9). Normally this selection is **No**.
9. Click **Next**.
10. Click either the **Shared** or **Not shared** radio button to choose whether to share with non-AppleTalk protocol computers (Figure 10).

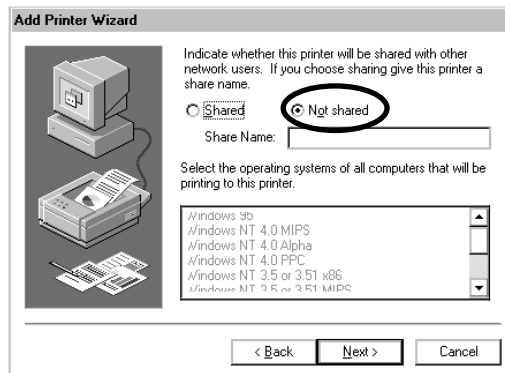


Figure 10. Entering Sharing Information

PostScript Printer Descriptions

Typically it is not necessary to share the printer. Selecting **Shared** allows Windows NT to make the AppleTalk Protocol printer available to other computers that are on the Microsoft network but without AppleTalk protocol.

If you choose **Shared**, complete steps a) and b) below:

- a) Enter a printer name in the **Share Name** field.
- b) In the list box, select the operating system of each computer that you expect to use with this printer.

Note: If you have any questions on sharing consult your network administrator or see your operating systems' user guide.

11. Click **Next**.

12. The wizard issues the following prompt: **Would you like to print a test page?**

Click **No**.

Note: You may select **Yes** to this prompt only if your imagesetter and the RIP are configured, operational, and ready to receive AppleTalk jobs.

13. Click **Finish**.

14. If prompted to load the Windows NT Printer Descriptions media or Windows NT operating system media, load the required diskette or CD.

15. The PPD installation is now complete. However, if your application is QuarkXPress or PageMaker continue with the instructions on Page 17.

QuarkXPress and PageMaker

QuarkXPress and PageMaker require you to add PPDs to their directory structures as well, so that these applications can use all of the PPDs' features.

QuarkXPress (3.3.x)

Confirm that the appropriate PPD for your imagesetter from the PC Printer Descriptions Windows NT 4.0 media to your Windows system directory, e.g.

```
C:\<NT 4.0 root directory>\system\...
```

Note: When using QuarkXPress, make sure the **specific printer** and the **Use for PDF** fields use the same output device.

Note: QuarkXPress for Windows is not fully compatible with the RIP and the Windows NT Intel operating system. Jobs sent from a NT workstation will display the published page setup name in the Output Controller of the RIP and not the document name. The PPD still functions the same and the media output is not affected.

QuarkXPress (4.0)

QuarkXPress 4.0 has added the PPD Manager Utility. This utility allows the user to select what PPDs will be available to the application. The PPD system folder for correctly installed PPDs (printers) should be:

```
c:\<NT 4.0 root directory>\system32\spool\drivers\w32x86
```

Note: QuarkXPress for Windows is not fully compatible with the RIP and the Windows NT Intel operating system. Jobs sent from a NT workstation will display the published page setup name in the Output Controller of the RIP and not the document name. The PPD still functions the same and the media output is not affected.

PostScript Printer Descriptions

PageMaker (6.5)

Copy the appropriate PPD corresponding to your imagesetter from the PC Printer Descriptions Windows NT 4.0 media to the following directory, e.g.

`\PM65\Rsrc\Usenglish\Ppd4`

Note: When using PageMaker, make sure the **printer** and the **PPD** fields use the same output device.

WINDOWS 95 PRINTER DESCRIPTIONS

This section describes how to install the PostScript Printer Descriptions (PPDs) on a PC using Windows 95. Windows 95 employs a *wizard* to coach you through the installation steps. A wizard is a series of hypertext dialog boxes that contain software controls and instructions to perform a procedure.

Follow the instructions in this document to initiate the Add Printer Wizard and to enter the data that the wizard requires to install the PPD.

Requirements

- Microsoft Windows 95 must be installed.
- Windows 95 installation media (CD-ROM or diskettes) must be available.

Installing Imagesetter PPDs

1. On the Windows 95 start-up screen, click the **Start** button to open the Start menu.
2. In the Start menu highlight the **Settings** option to open its popup menu.
3. In the Settings popup menu click the **Printers** option to open the Printers group window.

PostScript Printer Descriptions

4. In the Printers group double click on the Add Printer Icon to launch the Add Printer Wizard.



Figure 11. Add Printers Wizard

5. In the Add Printer Wizard click **Next**.
6. In the succeeding dialog box, choose the **Local printer** option button.
7. Click **Next** to view the next wizard dialog box, which allows you to choose the PPDs that you want to install.

The dialog box contains two list boxes titled **Manufacturers** and **Printers**, and a button called **Have Disk**.

Note: The **Back** and **Next** buttons successively display the dialog boxes for the wizard.

Complete either 8a or 8b, below, depending on your installation requirements.

Additional Installations

- 8a. If you are installing PPDs that are already available to your Windows 95 session, complete the following steps.
 - a. In the **Manufacturers** list box highlight the appropriate manufacturer.
 - b. In the **Printers** list box highlight the name of the imagesetter you want.
 - c. Click **Next**.

New Installations

- 8b. If you are installing the PPDs (or replacing them with new ones) from a disk, complete the following steps.
 - a. In the Add Printer Wizard click the **Have Disk** button. A dialog box named Install From Disk prompts you to insert the installation disk.
 - b. Insert the RIP CD ROM disk into the CD ROM drive and click **OK**.

Note: If you don't know the name of the CD ROM drive, click the **Browse** button to open the Browse dialog box and visually locate the CD ROM drive.

- c. In the **Printers** list box highlight the name of the imagesetter you want.
 - d. Click **Next**.

PostScript Printer Descriptions

9. In the Add Printer Wizard click the name of the port you want to use with the selected imagesetter.

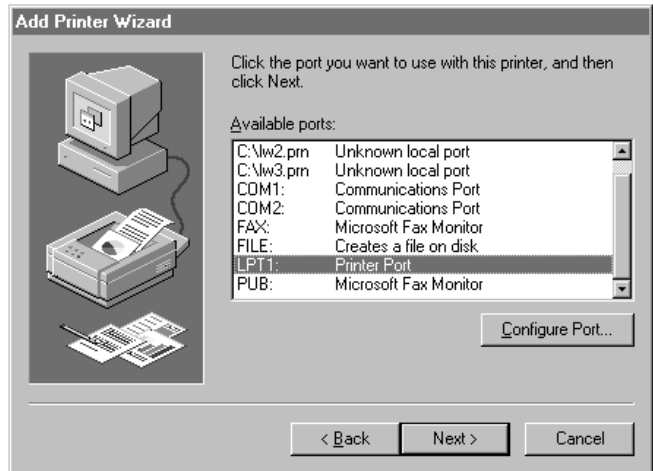


Figure 12. Choosing a Printer Port

10. Click **Next**.
11. The new dialog box prompts you to enter a printer name, which appears in the application. You may leave the default printer name or enter a new one.
12. Click **Next**.
13. The wizard dialog box also contains the following prompt:
Do you want your Windows-based programs to use this printer as the default printer?
Click either the **Yes** or **No** option button.
14. Click **Next**.
15. The wizard issues the following prompt: **Would you like to print a test page?**
Click the **No** button. You should not print a test page because you may not be configured yet to a published page setup.

16. Click the **Finish** button.
17. At the software prompt, load the Windows 95 Printer Descriptions media and Windows 95 operating system media, as necessary.

If the software prompts you to find a file named *****.PPD, click the **Browse** button and use the Browse dialog box to locate the file. If you are installing a new PPD this will most likely be on drive A or B.
18. Click **OK** in the Open dialog box.
19. Click **OK** in the Copying Files dialog box to copy the files and close the Add Printer Wizard.
20. Configure an imagesetter (virtual printer) as required by the network that connects your PC to the RIP workstation (e.g., Maclan by Miramar).

QuarkXPress and PageMaker

QuarkXPress and PageMaker require you to add PPDs to their file structure as well, so that these applications can use all of the PPDs' features.

QuarkXPress (3.3.x)

Copy the appropriate PPD corresponding to your imagesetter from the PC Printer Descriptions Windows 95 media to your Windows system directory, e.g.

C:\windows\system\...

Note: When using QuarkXPress, make sure the **specific printer** and the **Use for PDF** fields contain the same output device.

Note: QuarkXPress for Windows 95 is not fully compatible with the RIP and the Windows 95 Intel operating system. Jobs sent from a Windows 95 workstation will display the published page setup name in the Output Controller of the RIP and not the document name. The PPD still functions the same and the media output is not affected.

PostScript Printer Descriptions

QuarkXPress (4.0)

QuarkXPress 4.0 has added the PPD Manager Utility. This utility allows the user to select what PPDs will be available to the application. The PPD system folder for currently installed PPDs should be:

c:\<Windows 95 root directory>\system\

Note: QuarkXPress for Windows 95 is not fully compatible with the RIP and the Windows 95 Intel operating system. Jobs sent from a Windows 95 workstation will display the published page setup name in the Output Controller of the RIP and not the document name. The PPD still functions the same and the media output is not affected.

PageMaker (6.5)

Copy the appropriate PPD corresponding to your imagesetter from the PC Printer Descriptions Windows 95 media to the following directory, e.g.

\PM65\Rsrc\Usenglish\Ppd4

Note: When using PageMaker, make sure the **print to** and the **type** fields contain the same output device.

PostScript Printer Descriptions Installation and Release Notes

Power Macintosh

Introduction

This document describes procedures used to install a PPD (PostScript Printer Description) that has been tailored for your new output device. These files are designed to help you take advantage of different features such as paper sizes and Level 2 functionality.

PPD Installation Procedure

The PPD file was designed to incorporate a wide range of printer features for the imagesetters. The PPD was created according to the Adobe Systems PostScript Printer Description File Format Specification and can be used by various applications which use PPDs, such as Adobe PageMaker and QuarkXPress.

Installation

1. Insert the RIP CD ROM disk.
2. Double click on the PPD folder.
3. Double click on the Macintosh PPDs folder.
4. Select the appropriate PPD and “drag and drop” it into the Macintosh boot disk’s **System Folder:Extensions:Printer Descriptions** folder.

Note: This location is appropriate for most applications as well as for attaching PPDs to laser writer drivers.



**For QuarkXPress 3.3 and 3.3.1,
place the PPD in the QuarkXPress folder.**

5. If any applications are currently open, **Quit** the applications and relaunch them to recognize the PPD

PostScript Printer Descriptions

Using Apple Laserwriter 8.x Driver and PPDs

With the Apple LaserWriter 8.x driver, a PPD can be selected and setup directly within the LaserWriter driver. Read the readme file provided with your LaserWriter driver prior to establishing a LaserWriter “printer”.

Note: Some applications may allow a PPD to be selected from within the application in addition to from within the LaserWriter driver. If this is possible, select the same PPD from within the application as from within the LaserWriter driver.

1. To select a PPD from within the LaserWriter driver, from the Apple menu, pull down to Chooser. Figure 13 is displayed.



Figure 13. Chooser Window (Example 8.5.1)

2. Select the appropriate LaserWriter driver. (Figure 13 uses LaserWriter 8.5.1 as an example.)
3. Select the appropriate PostScript printer (Input channel of RIP).

4. **Select PPD** by interrupting “Auto Setup”. See Figure 14, or Choose **Select PPD** in the setup dialog box (see Figure 15).

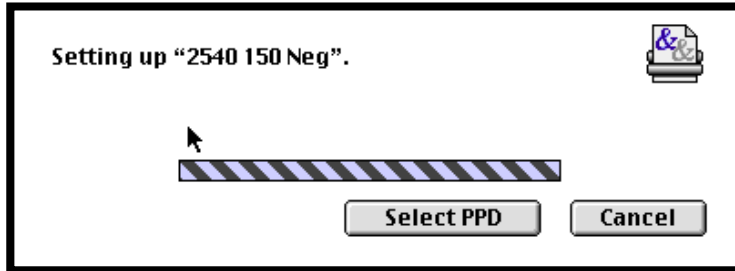


Figure 14. Auto Detect

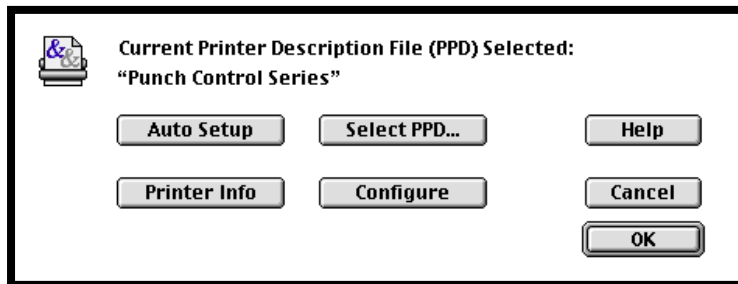


Figure 15. Setup DB

5. Scroll through the window to locate the desired PPD. See Figure 16.
6. Highlight the appropriate PPD and click Select to choose the desired PPD and return to the previous window.
7. Click OK to return to Figure 13, “Chooser Window (Example 8.5.1)”.
8. Close the Chooser window.

Further information on the LaserWriter 8.x driver can be obtained from Apple Computer Corporation.

PostScript Printer Descriptions

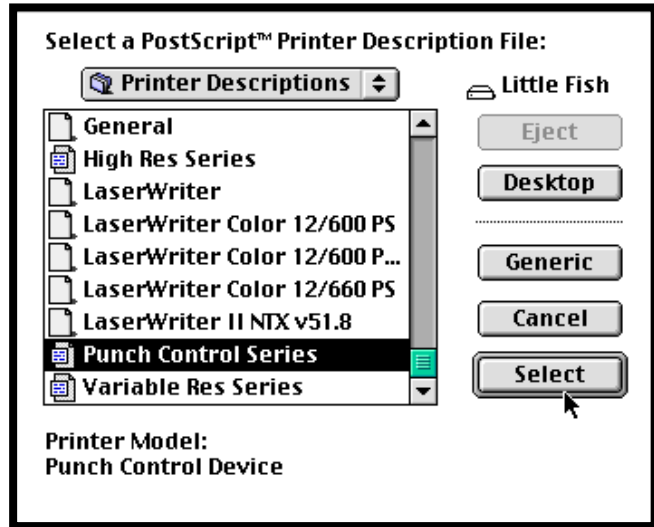


Figure 16. Select PPD Dialog Box